



Lodge Farm Primary School April Newsletter



Caring and working together


Blackpool

Our annual Blackpool coach trip is on Saturday 20th August—Tickets are £13, payment can be made on parent pay or cash at the school office. £5 deposit is required by 20th May to secure your seat.



March into May!!

All children who have 100% attendance during May will have extra playtime on the last day of term.



**March in
For May**

Pupils who are in school every day in May will have an extra 15 minutes playtime with a game of their choice on Thursday 26th May.

Tally the 18 days in May

| | | | | |
|----|----|----|----|----|
| 3 | 4 | 5 | 6 | |
| 9 | 10 | 11 | 12 | 13 |
| 16 | 17 | 18 | 19 | 20 |
| 23 | 24 | 25 | 26 | |

Monday 2nd May is a bank holiday
Friday 27th May is an Inset day

Colour Run

This year we are repeating our amazing colour run on 24th June, all Lodge Farm children have free entry and adults are welcome at £5 per adult, spaces are limited



though so please book now to avoid disappointment!!

Please also ensure that all parents have downloaded and have access to Marvellous Me as our communications and reminders as well as club notifications will be sent to you via the Marvellous Me app.

If you need a reminder for any passwords please email Mrs Preston on postbox@lodgefarmprimary.co.uk

Parent Pay Reminder

Please could all parents check their accounts regularly and top up when needed. Credit needs to be on accounts prior to attending wrap around clubs and ordering school dinner.



FOLLOW US ON SOCIAL MEDIA

FACEBOOK—[FACEBOOK.COM/LODGEFARMWILLENHALL](https://www.facebook.com/lodgefarmwillenhall)
TWITTER—[@LODGEPRIMARY](https://twitter.com/lodgeprimary)



Attendance Aces

Reminder—we need contact for each day of your child's absence, you can get in touch

Via telephone

01902 928 900

Email

Postbox

@lodgefarmprimary.co.uk

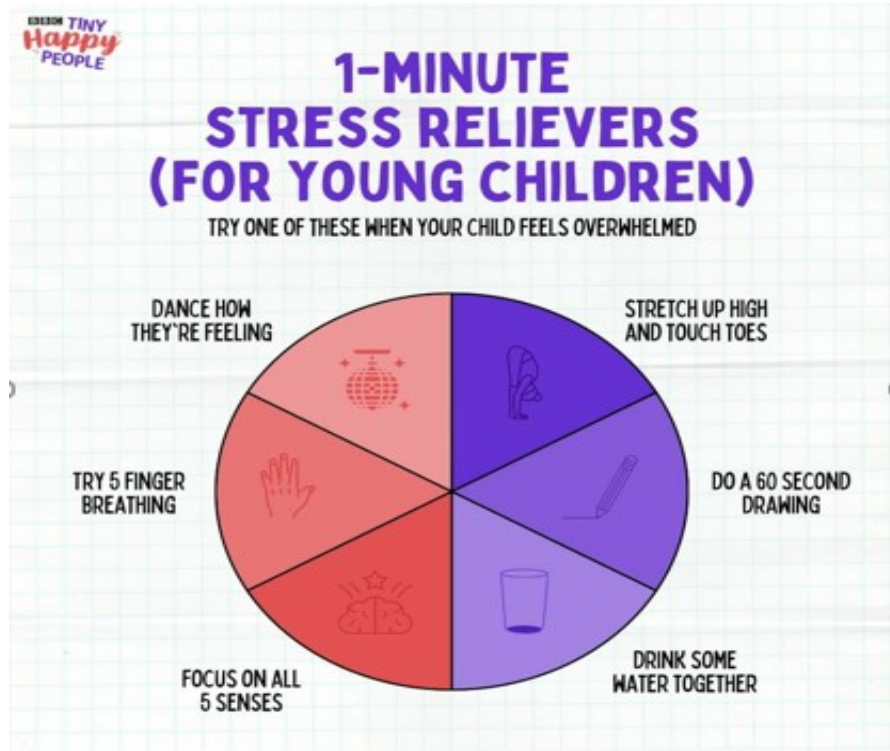
Send us a Facebook



Attendance

Our whole school attendance target this year is **96%**.

| | |
|--------------|-----|
| Reception CH | 95% |
| Reception HK | 95% |
| 1OL | 86% |
| 1/2KT | 91% |
| 2HW | 97% |
| 3PB | 91% |
| 3ND | 95% |
| 4SW | 93% |
| 4DB | 96% |
| 5BM | 89% |
| 5RH | 93% |
| 6LL | 92% |
| 6HL | 93% |



Coming up in the next few weeks...

| 2022 | |
|------------------|-----------------------------|
| 2nd May | Bank Holiday—School closed |
| 9th May | Yr 6 SATS begin |
| 3rd May | After school clubs start |
| 27th May | INSET Day—School closed |
| 2nd & 3rd June | Bank Holiday—Queens Jubilee |
| 4th June | Return to school |
| 10th June | Big Camp out |
| 24th June | Colour Run |
| 29th & 30th June | Year 6 Bikeability course |



Caring and working together



Lodge Farm Primary School

BIG CAMP OUT

Friday 10TH JUNE

£20 PER FAMILY (UP TO 5)
INCLUDES OUTDOOR CINEMA, CRAFTS, BREAKFAST, EVENING SNACKS & SO MUCH MORE!

TO BOOK A PLACE, COMPLETE THE REGISTRATION FORM AND PAY FEE. EXTRA PLACES CAN BE BOOKED AT £5 PER PERSON

Lodge Farm Primary School

Join us on our

DAY TRIP TO BLACKPOOL

Saturday 20th August

Open to all Lodge Farm families

£13 per person

Coach collection from school at 8am prompt, returning to school at approx 8.30pm

To book, please make payment via ParentPay with a £5 non-refundable deposit

Spaces are limited and all bookings require a suitable adult to supervise their children whilst on the trip—Cost is for travel only and you can enjoy the day how you wish.

Lodge Farm Primary School

Let's run together & have fun!

SHINE ACADEMIES

COLOUR Fun Run

Friday 24th June

Lodge Farm Primary School

All Lodge Farm children have free entry. Any adults that wish to take part with their child will be charged £5pp. THERE WILL BE LIMITED SPACES FOR ADULTS

postbox@lodgefarmprimary.co.uk OR CALL 01902 928900